

***„Gewaltprävention im städtischen Raum am Beispiel von Townships in Südafrika“***

von

**Alastair Graham  
Michael Krause  
Udo Lange  
Wolfgang Theis  
Trevor Hollis Turner**

Dokument aus der Internetdokumentation  
des Deutschen Präventionstages [www.praeventionstag.de](http://www.praeventionstag.de)  
Herausgegeben von Hans-Jürgen Kerner und Erich Marks im Auftrag der  
Deutschen Stiftung für Verbrechensverhütung und Straffälligenhilfe (DVS)

---

Zur Zitation:

Alastair Graham, Michael Krause, Udo Lange, Wolfgang Theis, Trevor Hollis Turner:  
Gewaltprävention im städtischen Raum am Beispiel von Townships in Südafrika, in: Kerner, Hans-  
Jürgen u. Marks, Erich (Hrsg.), Internetdokumentation des Deutschen Präventionstages.  
Hannover 2011, [www.praeventionstag.de/Dokumentation.cms/1324](http://www.praeventionstag.de/Dokumentation.cms/1324)

# Violence Prevention through Urban Upgrading



AHT GROUP AG  
Management & Engineering



kfw  
ENTWICKLUNGSBANK



Federal Ministry  
for Economic Cooperation  
and Development



Violence Prevention through Urban Upgrading



CITY OF CAPE TOWN | ISIXEKO SASEKAPA | STAD KAAPSTAD

**Africa → South Africa  
→ Western Cape → Cape Town**

- **African Continent - 57 countries - 1 billion people**
- **Southern Tip - South Africa - close to 50 million people**
- **Diverse country - 11 official languages - 9 provinces**
- **Western Cape - Cape Town - Metro area - 3,7 million people**



Violence Prevention through Urban Upgrading



CITY OF CAPE TOWN | ISIXEKO SASEKAPA | STAD KAAPSTAD





# Beautiful Cape Town

- **Cape Town Municipality - budget 27 billion - 23000 employees**
- **Best run metro in South Africa**
- **7 Consecutive unqualified audits**
- **“Number 1” tourist destination**
- **Events capital of Africa**
- **Let these pictures tell their own story...**



# Cape Town by night







**A city in  
Africa**



# Parks, environmental management





# Informal trading





Fan Walk, Cape Town – 580 000 people



Jeff Ayliffe Images



# German fans





# Robben Island, Cape Town







.....but what of the other realities

- **Unemployment**
- **Safety & security**
- **Poverty**
- **Housing**



# Some Questions

What has been achieved?

What must still be achieved?

What impact has the programme had on crime statistic?

Have safety levels increased?

What partners are required to achieve the desired outcomes?



# Städtische Gewaltprävention - die Rolle der KfW

Wer wir sind, wie wir vorgehen

## Vortrag beim Deutschen Präventionstag in Oldenburg

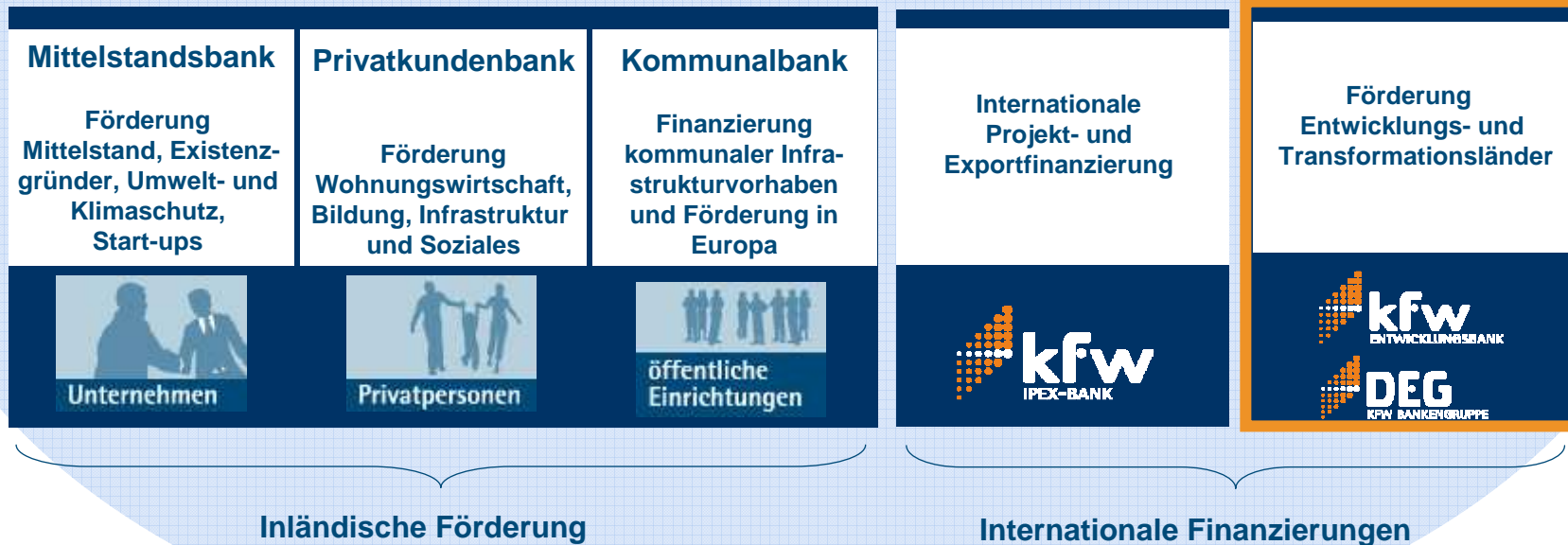
30. Mai 2011

Wolfgang Theis  
KfW Entwicklungsbank  
Kompetenzcenter Frieden und Sicherheit

Die Zukunftsförderer

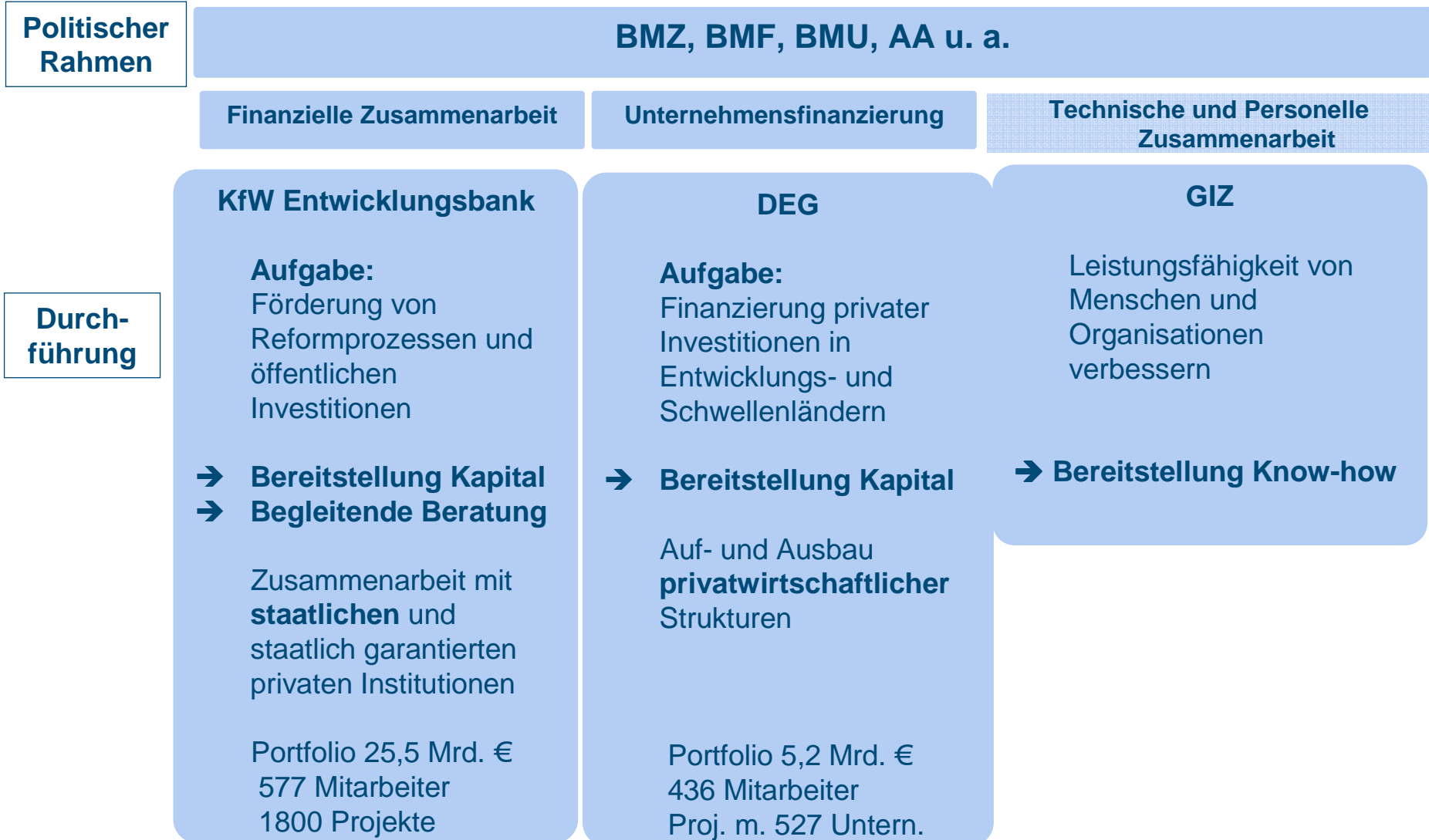


# Wir sind Teil der KfW Bankengruppe





# Unsere Rolle im System der deutschen Entwicklungszusammenarbeit

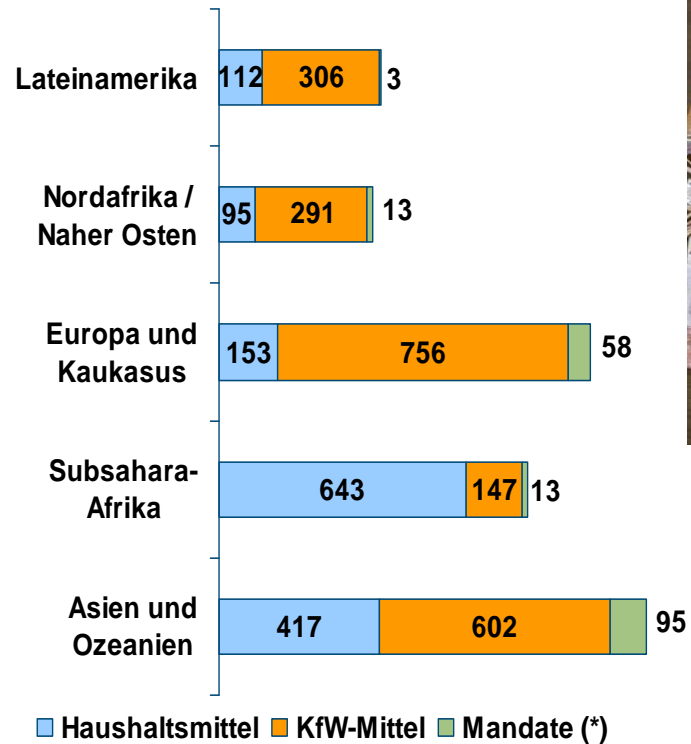


## Wie wir arbeiten

- **Wir beraten** die Bundesregierung und unsere Partner in entwicklungspolitischen Fragen, bei der Umsetzung ihrer Länder- und Schwerpunktstrategien.
- **Wir wirken mit** bei der Auswahl, Vorbereitung und Prüfung von Vorhaben.
- **Wir unterstützen** unsere Partner bei der Durchführung **ihrer** Projekte/Programme.
- **Wir übernehmen Mitverantwortung** für den entwicklungspolitischen Erfolg der Vorhaben.
- **Wir überwachen** die wirksame und effiziente Nutzung der zur Verfügung gestellten Mittel.



# FZ-Zusagen 2010 nach Mittelherkunft und Sektoren (in Mio. EUR)



**Finanzsektor**  
**18%**



**Wirtschaftliche  
Infrastruktur**  
**47%**



**Soziale  
Infrastruktur**  
**21%**

(\*) Ohne Betreuungsmandate in 2010 (10 Mio. EUR)



# Finanzielle Zusammenarbeit mit Südafrika



**Gesamtzusagen FZ: EUR 364 Mio.  
(1996-2010)**

Südafrikanische Townships: Lehrbuch-Beispiel dafür, wie zyklische d. h. immer wiederkehrende Gewaltausbrüche wirtschaftliche und soziale Entwicklung verhindern. Lokale Konflikte entstehen sowohl aus politischen wie auch aus kriminellen Interessenskollisionen heraus.

Hinzu kommen die Folgen der Apartheid Politik: fehlende Infrastruktur in bestehenden Townships, keine soziale Kohäsion verschiedener Bevölkerungsgruppen, keine Identifikation mit dem Wohnort.

Bevölkerungswachstum durch Zuzug erfolgt schneller als Staat, Provinz und Kommunalbehörden reagieren können

# VPUU - Unterstützung durch die KfW Entwicklungsbank



Bundesregierung -- durch KfW -- finanziert

- Infrastruktur mit gewaltpräventiver Wirkung
- Bereitstellung des Social Development Fund
- Beratungsleistungen (Consulting Services)

Mittelherkunft

Mittel aus dem Bundeshaushalt (BMZ):

EUR 15,5 Mio.

Südafrikanische Mittel

(Stadt Kapstadt, Finanzministerium.:

rd. EUR 36,5 Mio.

## Direkte Wirkung

- Verbesserung der Sicherheitslage im Siedlungsgebiet Khayelitsha;
- Bereitstellung von Infrastruktur und sozialen und kommerziellen Dienstleistungen, die auf Gewaltprävention ausgerichtet sind;
- Stärkung zivilgesellschaftlicher Organisationen;
- Verankerung von Prinzipien gewaltpräventiver Stadtplanung innerhalb der Stadt- und Provinzverwaltung.

## Indirekte Wirkungen der deutschen Unterstützung

- \* Schaffung zusätzlicher **finanzieller Spielräume** für die Stadt Kapstadt
- \* **Wissenstransfer** von erfolgreichen Programmen in anderen Ländern
- \* Bringt unterschiedliche **Partner** zusammen: national und international
- \* Verbesserte **politische Sichtbarkeit**
- \* Enges fachliches und politisches **Monitoring** der Projektergebnisse

Vielen Dank für Ihre Aufmerksamkeit...







2004/01/01  
08:37:44







# Project background

A pilot in Khayelitsha, first for South Africa  
Area Based approach

Site C

Partners:

City of Cape Town  
German Federal Ministry for Economic Cooperation  
and Development, German Development Bank  
Province of Western Cape  
National Treasury  
Khayelitsha Development Forum  
Private institutions

Overall Budget: 500 Million Rand = 52 Mio EURO

Duration: 2006-2014 in 3 Phases

Phase 1 set up

Phase 2 implementation in Khayelitsha

Phase 3 Mainstreaming, roll out to other areas





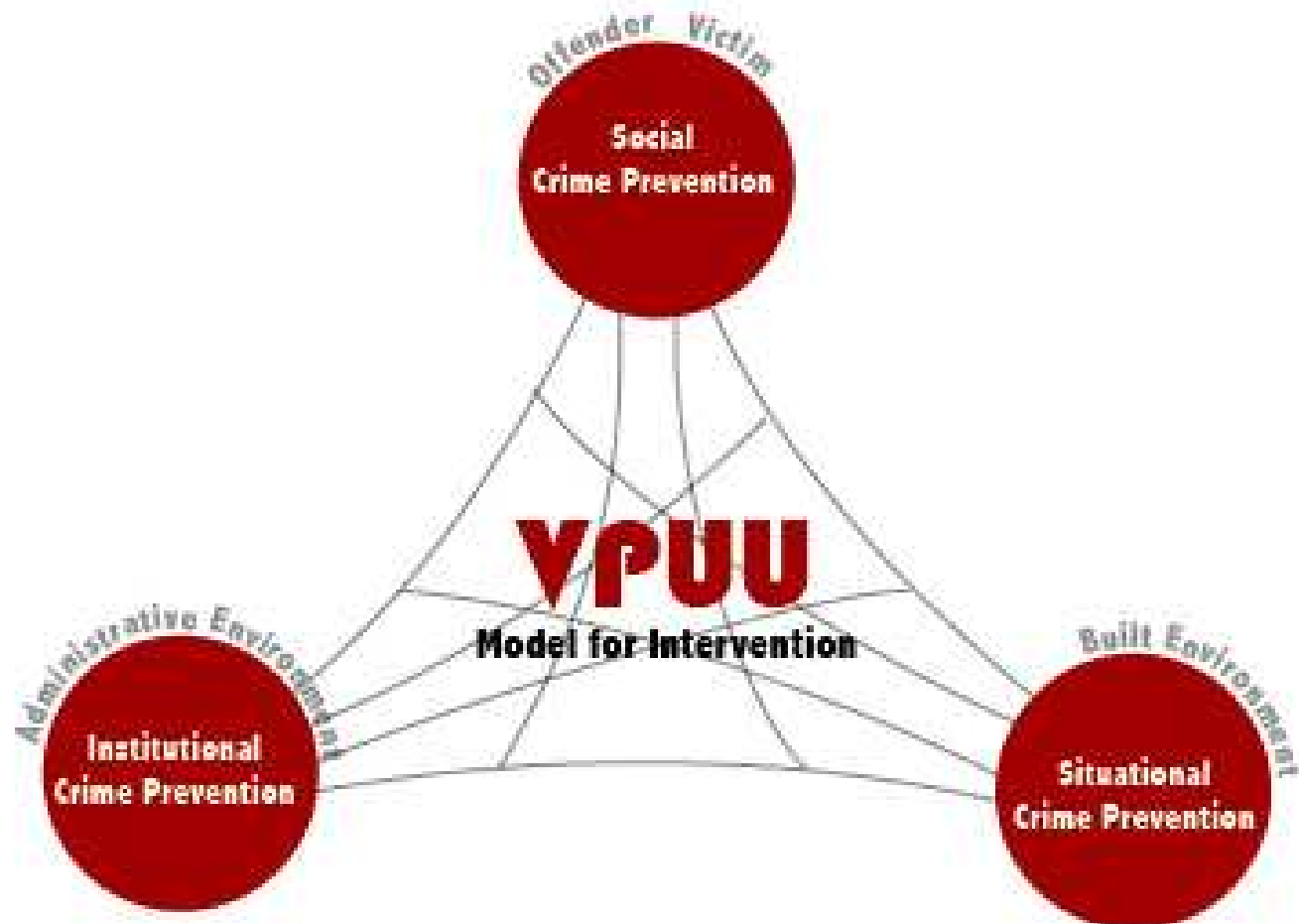
# Vision

**Build safe and integrated communities  
to overcome the four types of  
exclusion**

(Economic, cultural, social, institutional  
exclusion)



# Strategy



# Hybrid Model

**Public Health Life  
Cycle Approach**

Early Childhood  
Interventions

School aged  
interventions

Economic  
programmes  
targeted at youth

**Community based  
social capital**

Public awareness  
models  
community  
mobilisation

Community  
Delivery of  
Services

Operation and  
Management on  
area basis

**CPTED  
Community policing  
Trad. responses**

Spatial planning  
strategies

Policing Models  
Neighbourhood  
Watch

Legal and Justice  
Interventions

**Knowledge Management, M&E**

# Methodology

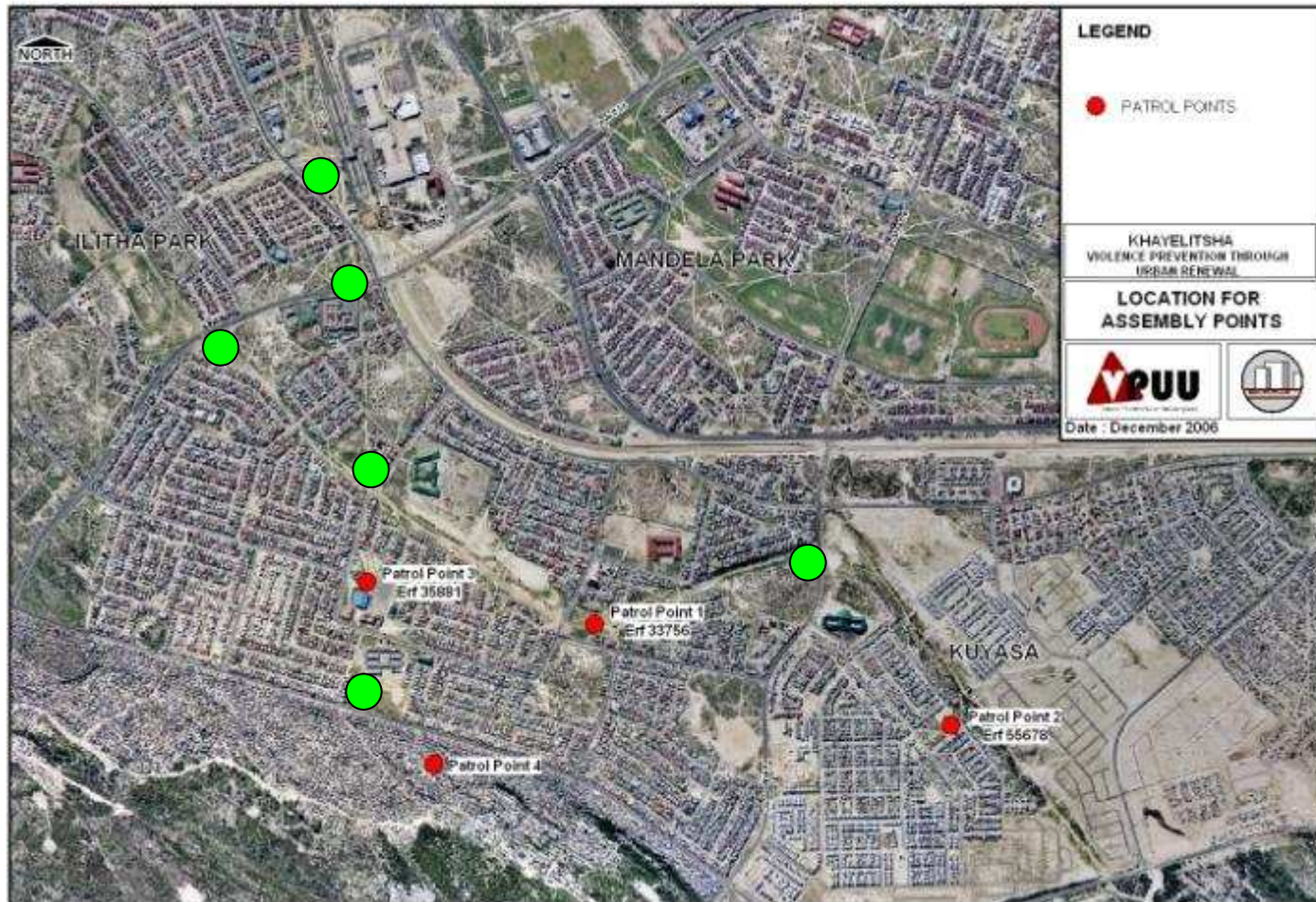


**From empowerment to negotiated solutions**





# Implementation



# Community Action Plan

	Cultural/ Social	Economic	Institutional	Safety & Security	Infrastructure	M & E
Short-term	Youth-related  Women Empowerment  Sport develop.	Support ECD Strategy	Leadership Training	Formalised neighbourhood watch initiatives	Operation and maintenance of existing toilets	Indicator development for the in-situ programme
Medium-term	Support to reduce gender and youth based violence  SDF Projects	Business support	Spatial Reconfiguration Plan	Safe pedestrian crossing over Mew Way	Kick-about field & facility  Neighbourhood Centre	Household Survey  Monument Photographs
Long-term	Development of youth centre	Bulk buying cooperatives  Small-scale manufacturing	Equitable access to community facilities and schools	Improved pedestrian walkways and access routes	Delivery of technical infrastructure	Annual review of CAP and on-going projects



Violence Prevention through Urban Upgrading



CITY OF CAPE TOWN | ISIXEKO SASEKANA | STAD KAAPSTAD



# Implementation





# URBAN DESIGN PRINCIPLES

- Mix of activities
- Passive surveillance of the public space
- Clear definition of public, semi public, private spaces
- Visual connections
- Ownership
- Community Delivery of Services



# Mainstreaming, Institutionalisation

1. Elements of VPUU into CoCT line functions:
  - Urban design Guidelines = Planning
  - ECD Policy implementation as kit of part = social development
  - NHW, voluntarism = Subcouncils, Safety
  - CDS = all utility departments, parks and garden
2. Replicate in other areas
  - Manenberg, Hanover Park, Gugulethu
3. Methodology
  - Informal Settlement Transformation Programme
4. Provincial Strategic Objective 5.4
  - „whole society safety approach“
5. National Outcome 3, 8
  - All people in South Africa are and feel safe
  - Sustainable human settlements and improved quality of household life



# Preconditions

- Strong leadership in local authority
  - To integrate
  - To provide budgetary allowances
  - Openess to learn and negotiate
- Institutional arrangement on community level
- Strong community leadership
- Methodology, Joint vision, partnership with community
- Integrated and area based approach
- Project manager and facilitator accepted by both local authority and community
- Process of integrity
- Multiple partnerships
- Funders with long term vision



# Component KM / M&E

**VPUU KM comprises a range of practices to**

- identify (Baseline Survey)**
- create databases (Dangerous Routes)**
- represent (Monument Photos)**
- disseminate (WUF 5 Rio 2010)**
- enable replication (VPUU Handbook)**

**insights and experiences**

**(comprising knowledge mainly embedded in organisational processes)**

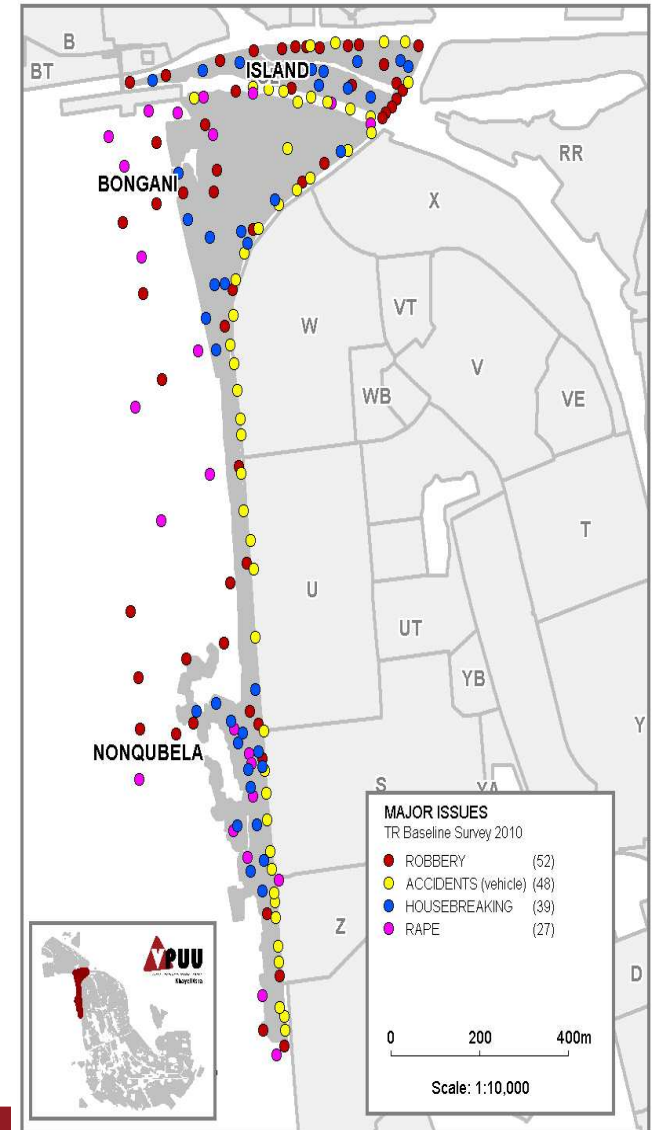




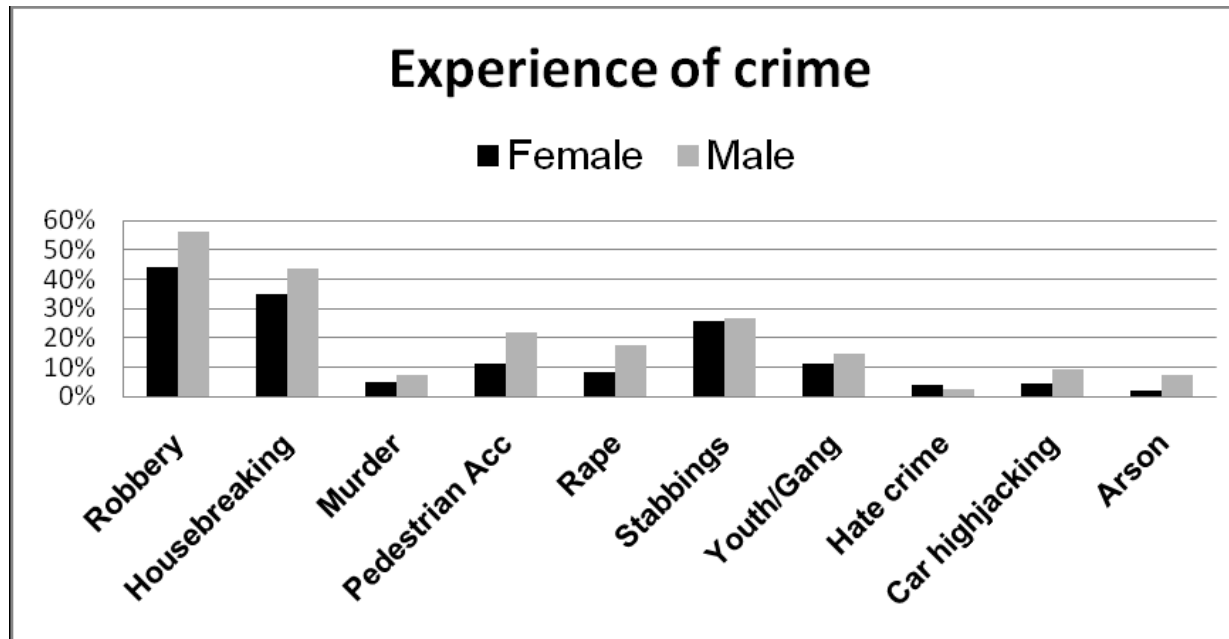
# KM Example 1 Baseline Survey

... a population random sample survey (ca. 580 interviews) and as such means the upgrading can start from a position of knowing local conditions, concerns and priorities.

A baseline like this enables any changes that may follow from interventions to be measured.



# KM Example 1 Baseline Survey



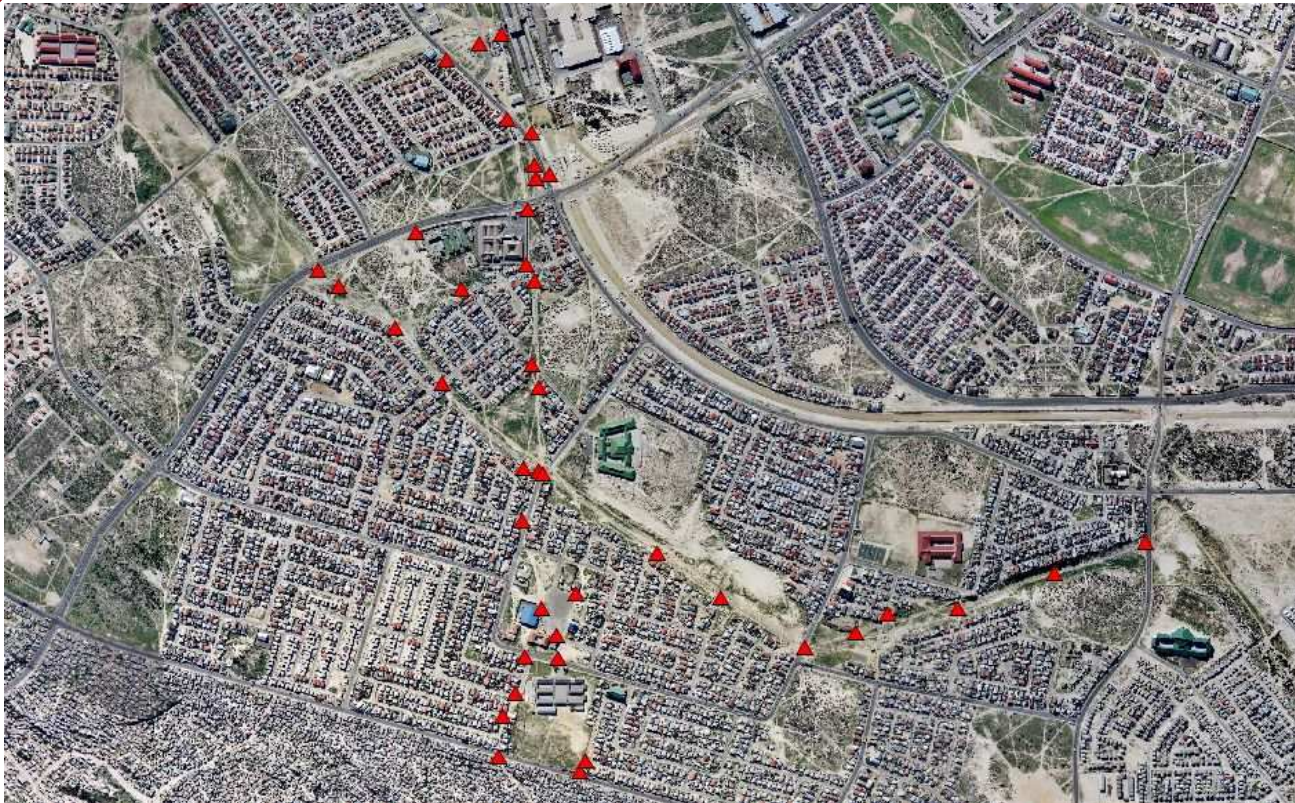
**Personal experience of crime over the past 12 months.**

50% of men and 40% of women report personal experience of robbery or housebreaking over the past year. The reported victimisation rate for all top 5 crimes is higher among men than among women.





# KM Manual Monument Photos



## Manual

**How to register physical changes and changes in use of public spaces over time by a fixed schedule for digital pictures (time series)**



# KM Dissemination

## **VPUU informs:**

- IDP of City of Cape Town
- Urbanization Strategy of Cape Town
- Knowledge Management Department of City of Cape Town (and vice versa)
- Provincial Government
- National Department of Human Settlements
- National Treasury NDPG

## **VPUU, its partners and donors participate actively in:**

- 2nd Conference on Development Cooperation Bonn 2009
- ILASA (Landscape Architecture) Award
- Impumelelo Award (Top 25 projects for Sustainable Projects in SA)
- World Urban Forum 5 in Rio de Janeiro March 2010 Best Practise
- Architectural Design Award

# KM Example Enable Replication

## **Proposed Handbook/Tool-box:**

**Module 1      Social Crime Prevention**

**Module 2      Situational Crime Prevention**

**Module 3      Community Participation**

**Module 4      Operation and Maintenance**

**Module 5      Integrated Development Planning**

**Module 6      Knowledge Management**



Violence Prevention through Urban Upgrading



CITY OF CAPE TOWN | ISIXEKO SASEKAPA | STAD KAAPSTAD

# Component KM / M&E

Monitoring & Evaluation consists of

- Log Frame Matrix
- Indicators
- Results-based Monitoring (Benefits)
- Impact Assessments (SDF)
- Audits/ex-post (KfW)

to inform

Project Management, Partners and Donors about the achievement of agreed overall and project goals



## M&E Example Benefits and Impacts

Indirect Benefits (**Impacts**): Positive primary and secondary long-term effects caused by project interventions, plausibly related to VPUU, directly or indirectly.

Perception of safety in area improved; Police reports less incidents; Police reports move of criminal incidents to other areas, Active Box concept under implementation in Manenberg with funds from NPDG

Attribution gap (e.g changes in police policy, xenophobic attacks, shebeens, drug market etc.)

Direct Benefits: Are expected or achieved short-term or medium-term positive effects through the use of outputs.

People pass through Active Box Area and stay, people come to meetings in Active Box at night, demand for rooms to rent in and around Active Box increases, O+M concept for Active Box used in x other CoCT facilities





## M&E Impact assessment: findings

Indicator	Finding	Attribute to SDF
Number of active members	84% had increase	61%
Frequency of activities	21% had increase	78%
Interaction with other projects	70% met new groups	50%
Spaces utilised (dignified)	47% improved space	45%
Range of ages involved	40% wider age range	30%
Self esteem of leaders	91% more confident	80%
Skills development	79% project management, delivery, FR	
Feelings of safety	91% feel safer while busy within projects	
New friendships	83% made 12+ new connections	
Exposure to positive role model	51% met new positive model	
Ethnic integration	24% included foreign nationals	


How local authority is perceived	89% view LA in more favourable light	
What changes were noted	First funder to respond to their level	
	Communicates at community level	
	Fund is accessible, tough and fair	

**Impact assessment  
VPUU Social  
Development Fund  
on Community  
Cohesion.**

**Stanford University  
21 September 2010**



CITY OF CAPE TOWN | ISIXEKO SASEKAPA | STAD KAAPSTAD



Thank you  
Trevor Hollis Turner,  
Wolfgang Theis, Alastair Graham,  
Michael Krause, Udo Lange

[www.vpuu.org](http://www.vpuu.org)

